



FOR NEW EQUIPMENT SALES, CALL
800.958.2555
TO SPEAK WITH AN ALTEC REPRESENTATIVE
or visit us online at altec.com

**Altec**
HOTLINE INSULATOR WASHER

FEATURES

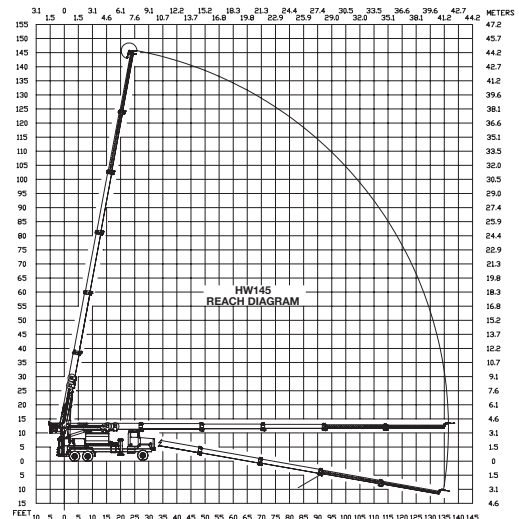
- Stainless Steel Water Tank with 2,000 gal (7,571 L) Capacity, 304 Stainless Steel
- Hydraulically Extended, Telescopic Booms
- Operator Work Station with Fully Adjustable Seat
- Intercom system Between Work Station and Cab
- Single Handle “Joystick” Controller for Boom Operation
- Single Handle “Joystick” Controller for Wash Monitor Operation
- Automatic Boom Stow Travel Latch
- Front and Rear Straight-Down Outriggers with Motion Alarm, Stays within Mirrors
- Hydraulic driven Water Pump
- Automatic Throttle Control
- Top or Bottom fill of Water Tank, with Strainer
- Hydraulic Oil Cooler with 12 VDC Fan
- Constant Resistivity Monitor Provided at Operator Console
- Portable Resistivity Tester
- Automatic Low Water Alarm, Out of Water Shutdown
- Painted White
- Two (2) Operator and Two (2) Maintenance/Parts Manuals

OPTIONS

- Boom mounted spotlights
- Tool Storage Compartment
- Ground Level Hose Reel(s) - Electric Rewind with 3/4 in (19 mm) to 1 in (25 mm) Diameter Non-Conductive Hose, and Length of 50 – 200 ft (15 - 61m)
- Hand-Held Wash Gun, Pilot Operated
- Spare Water Nozzle(s)
- Increased or Decreased Flow Nozzle(s)
- Additional Portable Resistivity Tester
- Truck Grounding Assembly including electric rewind reel, 100 ft of ground cable and clamps
- Wash Gun Grounding System
- Wheel Chocks
- Extra Manuals

Recommended safety equipment, available through Altec Supply, include wheel chocks.

REACH DIAGRAM



SPECIFICATIONS	Extendible Boom Height*	145 ft (44 m)
	Tank Capacity	1,825 gal (6,908 L)
	Operating Range with 1/4”(6.4 mm) Nozzle:	
	Flow	60 gpm (227 LPM)
	Pressure	Up to 750 psi (51.7 bar)
	Hydraulic Reservoir	80 gal (303 L)
	Extendible Boom Articulation	-9° to 80°
Rotation	375° Non-Continuous	
*Based on 50 in (127 cm) chassis frame height.		

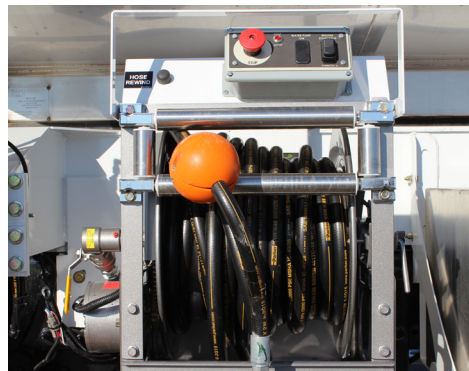
ERGONOMIC WORK STATION

Fully adjustable seat and all unit controls located at operator work station.



WATER HOSE REELS

Chassis-frame mounted water hose reels for ground washing.



WASHER NOZZLE

Washer nozzle has two axes of motion.



For more complete information on Altec products and services, visit us on the web at www.altec.com. Material and specifications are subject to change without notice. Featured units in photos may include optional features. Please contact an Altec representative for all available options. Altec® and the Altec logo are registered trademarks of Altec Inc. in the United States and various other countries and may not be used without permission. © 2018 Altec Inc. All Rights Reserved. AIOHW145-1018-v3

