



FOR NEW EQUIPMENT SALES, CALL  
**800.958.2555**  
TO SPEAK WITH AN ALTEC REPRESENTATIVE  
or visit us online at [altec.com](http://altec.com)

**Altec**<sup>®</sup>  
TELECOMMUNICATIONS  
CABLE PLACING AERIAL DEVICE

# T40P

## FEATURES

- Telescopic Non-Insulating Cable Placing Aerial Device with Boom Rest
- Two-Stage Hydraulic Boom Extension
- Pendant Lower Controls
- Hydraulic Platform Leveling System
- Single Handle Proportional Controls at Platform
- Engine Start/Stop at Upper and Lower Controls
- Manual Lowering Valve
- Closed Center Hydraulic System
- 120 VAC Circuit at Boom Tip with GFI Outlet in the Platform
- Fixed Mounted Arms for Optional Pulling Eye and Fairlead
- Two-Way Voice Communication System
- Tool boxes for the Platform
- Minimum Chassis Requirements of 26,000 lb (11,793 kg) 84 in CA or a 33,000 lb (14,982 kg) 114 in CA

## OPTIONS

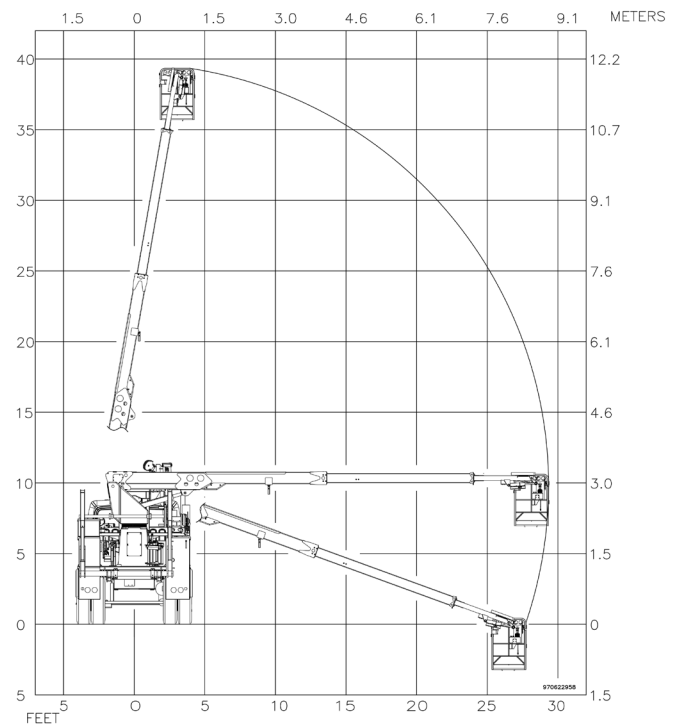
- Fairlead at the Platform
- Secondary Stowage System
- Reel Lifter/Driver with Automatic Engaging Hydraulic Drive
- 6,000 lb (2,724 kg) Reel Lifter/Driver
- 6,000 lb (2,724 kg) Reel Lifter/Driver with Brakes
- Cable Stringing Bull Wheel System with Towline (Requires Different Boom Rest)
- Pre-Lashing Package (Includes Lasher and Controls)
- 2,000 lb (908 kg) Strand Carrier
- 2,000 lb (908 kg) Strand Carrier with Brakes
- Lifting Chain for Strand Loading
- Capstan Winch Mounted on Curbside Reel Lifter Arm
- Pendant Foot Controller for Capstan Winch
- Platform Covers
- Platform Heater
- D-Block Storage Bins
- Inverter for 110V Power
- Steel and Fiberglass Body Configurations Available

Additional accessories available through Altec Supply include a fall protection system and wheel chocks.

SPECIFICATIONS	Ground to Bottom of Platform	35.7 ft (10.8 m)
	Working Height*	40.7 ft (12.4 m)
	Maximum Side Reach (at Platform Height)	29.4 ft (8.9 m) 7.0 ft (2.1 m)
	Stowed Travel Height*	11.5 ft (3.5 m)
	Platform Capacity	500 lb (227 kg)
	Platform Dimensions (End-Mount, Nominal with Pulling Eye)	29 x 29 x 43 in (737 x 737 x 1,092 mm)
	Lower Boom Articulation	-20 to 80°
	Side Load Capacity (with Boom Fully Extended)	600 lb (272 kg)
	Lower Boom Lifting Eye	2,000 lb (907 kg)
	Rotation	Non-Continuous, 370°

\*Based on a 40 in (1016 mm) chassis frame height.

## REACH DIAGRAM



### PROPORTIONAL JOYSTICK PLATFORM CONTROLS



### REEL LIFTER/DRIVER WITH AUTOMATIC ENGAGING HYDRAULIC BI-DIRECTIONAL DRIVE



### PENDANT MOUNTED CAPSTAN CONTROLS FOR SAFE EFFICIENT CAPSTAN OPERATION



For more complete information on Altec products and services, visit us on the web at [www.altec.com](http://www.altec.com). Material and specifications are subject to change without notice. Featured units in photos may include optional features. Please contact an Altec representative for all available options. Altec® and the Altec logo are registered trademarks of Altec Inc. in the United States and various other countries and may not be used without permission.  
© 2015 Altec Inc. All Rights Reserved. AIOST40P-0215-v1



NEW EQUIPMENT SALES

| 800.958.2555

| SALES@ALTEC.COM

| ALTEC.COM